

Install guide for the Avin Avant 2 headunit in a 2007 Mercedes E350 W211 Station Wagon



To remove command

Remove ash tray lift up front of gear lever surround then pull towards the front of the car.





Unplug 2 plugs from underneath.



Turn key on and move gear lever back and turn surround to the side. Lift ashtray housing up and pull out. Unplug cigarette lighter plug.



Remove 2 x screws from under stacker and slide out, unplug wires underneath. Unscrew 2 x screws under command unit (note these do not come out, just unscrew them lots) slide out command unit and unplug remaining plugs.

Amp

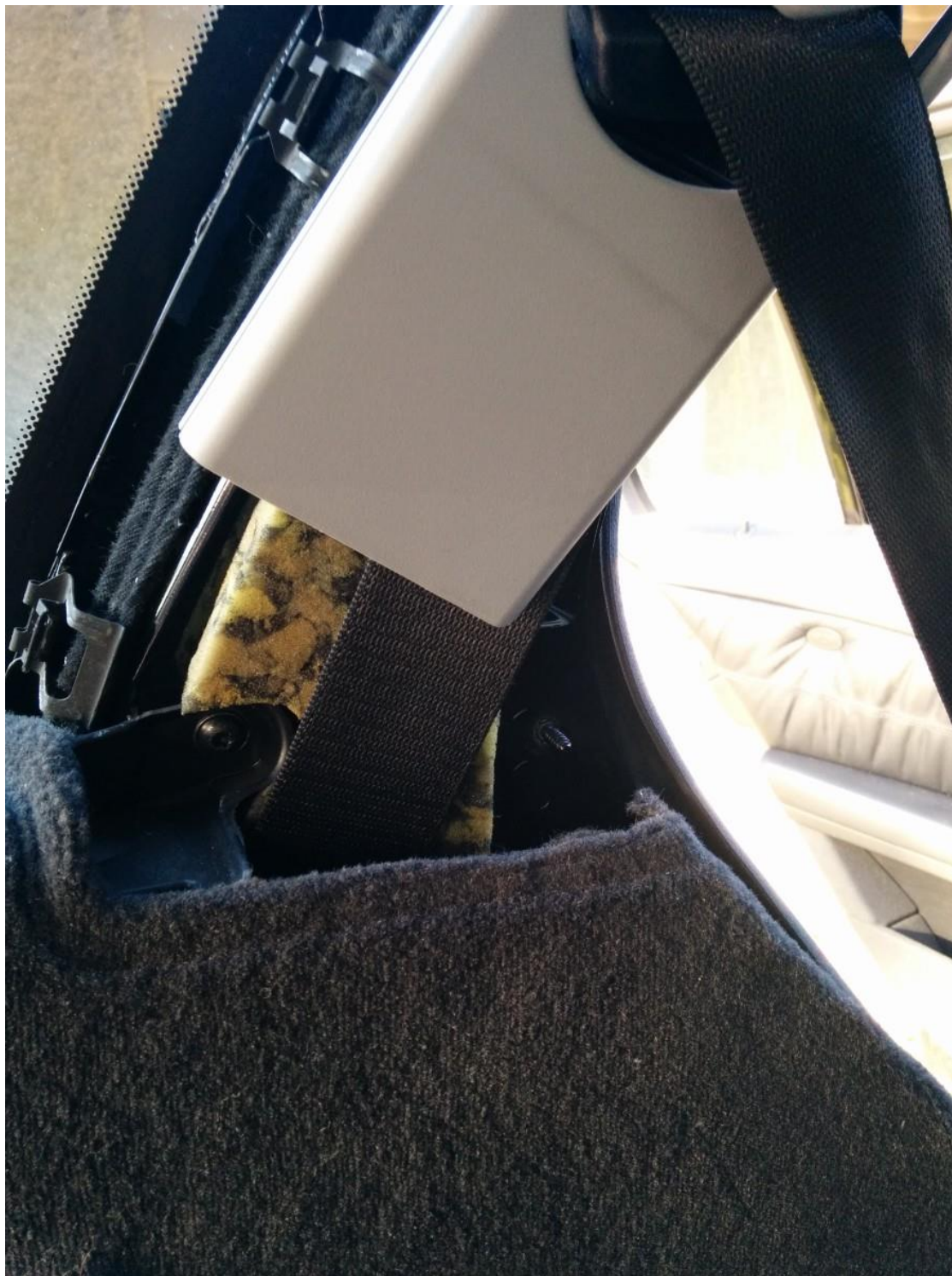
Press Emergency symbol in boot and pull cover out.



Remove 2 x screws at top of cover and remove. Remove seal from passengers' door and rubber boot over seat latch <http://pho.to/8rXvi/m> Pry cover from around seat belt and remove



Remove 1 more Screw from near seat belt



Ply front panel up from the floor area and work your way towards the front, fold forward the rear seat base, lift carpet under seat to locate 1 x 10mm plastic nut and one clip that holds the panel base



Remove front Panel. Locate Amp and undo the 3 x 10mm nuts to remove amp cage



Unplug plugs from amp which are towards the front of the car



unscrew 4 x 8mm nuts. Remove amp and unclip remaining clips.

Remove the door seals on the 2 passenger doors, unclip foot well covers by prising up, remove B pillar cover the same way <http://pho.to/8rXvi/k>

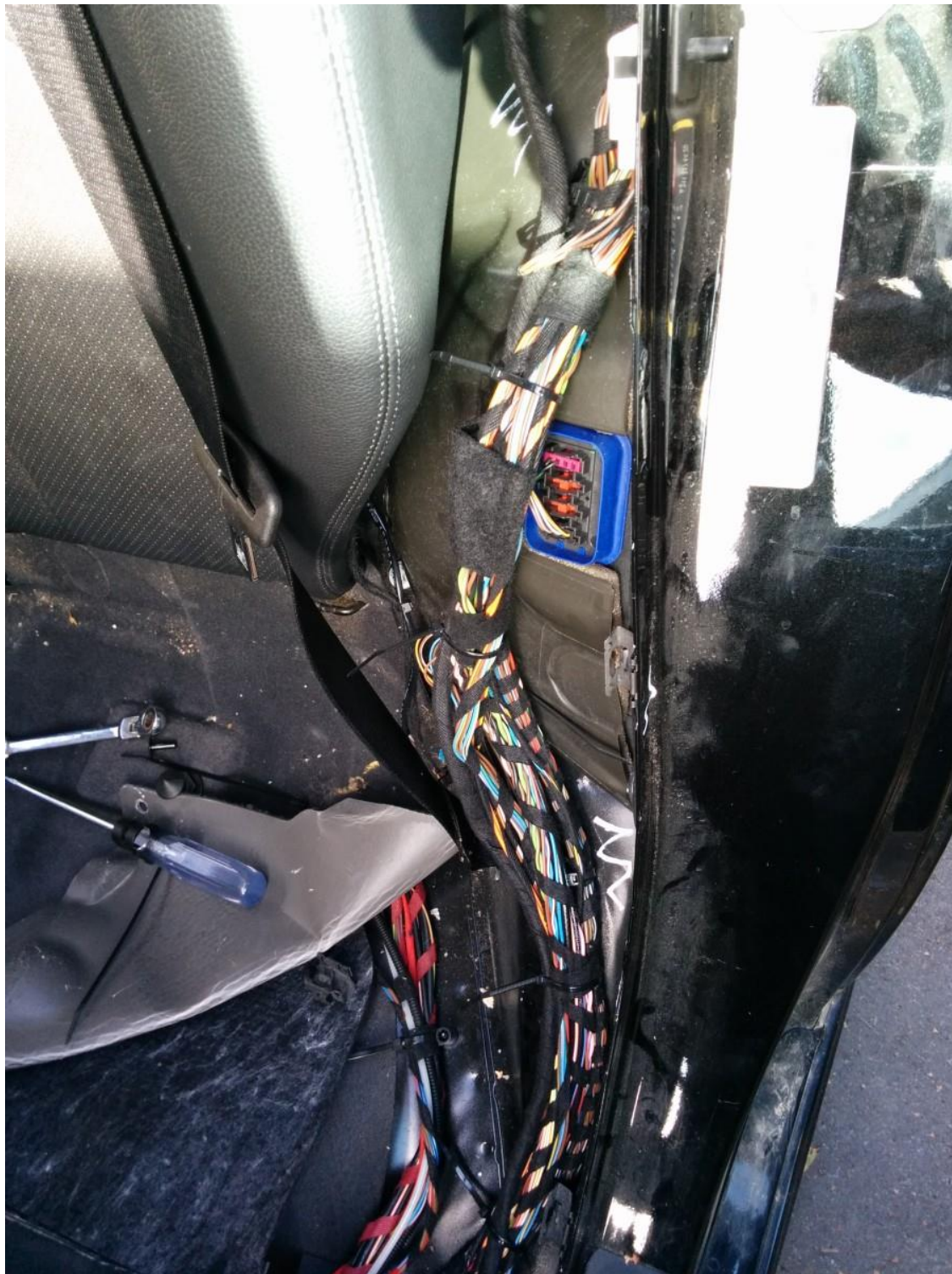
(I found it easiest to remove the top and bottom sections as one and just leave it hanging on the seatbelt. Remove the passengers carpet from the foot well in the front and the plastic panel below the glove box



Routing cable. Start at the rear and plug in your 3 plugs where the amp was removed.



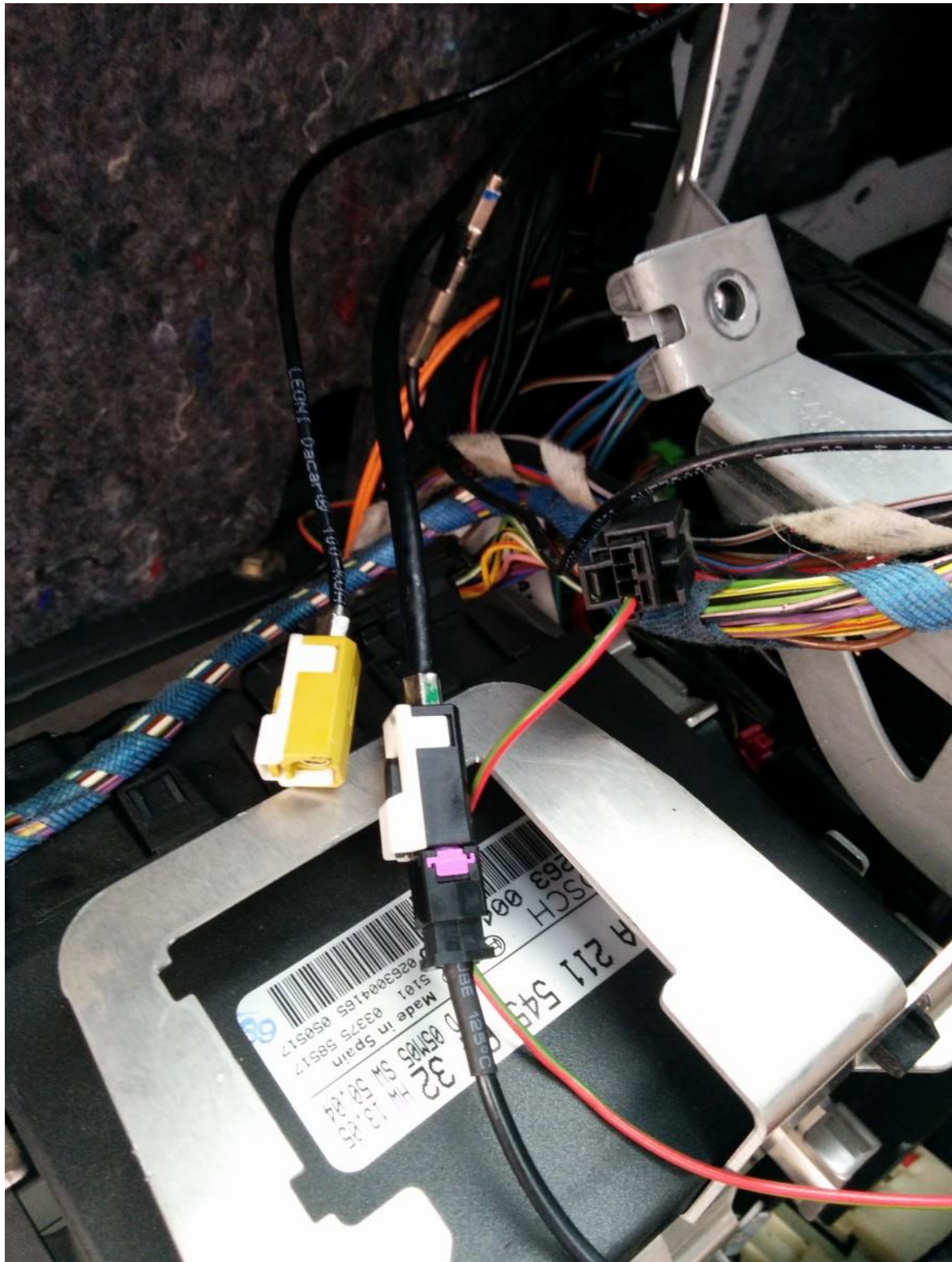
Thread the cable over the rear wheel well then beside the passenger seat



around behind the passenger hand foot well, behind the duct pipe and into the headunit area in the gap under the yellow plug. Return to the back and cable tie the new loom to the existing and fit in under the plastic covers along the foot well



Do the same with your aerial cable, this plugs into the black plug that was plugged into the amp



then run this to the head unit.

Note: Remember to plug in your CAN-TX unit into the white plug at the headunit end of the loom or your Avin unit wont go

Microphone

Remove the instrument cluster trim panel



I did this by just pulling towards me at the bottom. Once removed, clip your microphone in the top right and run your cable down and around the instruments, you will find a hole in the bottom left where you can feed your plug and cable through to the headunit location. Refit trim panel.

Dash/driver cam

With the passenger door seal still removed prise the A pillar cover away from the door, I left mine still clipped at the dash end because I didn't need to take the whole thing off. Stick the camera to the windscreen beside the rear view mirror



<http://pho.to/8ru9e>

make sure the cable is to the left of the camera not like my photos or it will be upside down :) Tuck the cable under the hood lining (with the A pillar cover off it is easy to get it under), continue the cable down under the A pillar cover under the dash, in behind the foot well again and through to your head unit.

Rear camera

Remove 1 x phillips screw from cover around door handle and slide cover up



<http://pho.to/8rXvi/ym>

Remove clips from around door panel, to do this remove centre of clip then remaining part



<http://pho.to/8rXvi/k4>

Remove plastic trim from the bottom of the door then remove the remaining panel by sliding up towards the glass, unplug light. Remove 2 screws on the outside of the door that hold the chrome strip above number plate, there is then 2 bolts on the inside of the door



<http://pho.to/8ru9e/ip>

remove those then remove the chrome strip



<http://pho.to/8ru9e/3z>

Remove 2 screws for number plate light and then from inside the door prise the retaining clip on the number plate light holder to pop it out. Drill a hole in the number plate light holder



<http://pho.to/8ru9e/s8>

then fit it back in place



<http://pho.to/8ru9e/oj>

Place the RCA and power cables for your camera through the chrome strip then through the number plate light holder, refit the chrome strip then screw the camera into the light holder. Wire camera transmitter to your reverse light so it turns on when you reverse. On my car + was yellow with a red stripe and – was brown. Cable tie transmitter and cables inside door.

The receiver end of the transmitter just needs to be wired into a accessory power feed near your headunit. I was lucky enough to have existing power for a old toll card reader as my car is a Japanese input. Plug the yellow RCA cable into the Reversing camera input on your head unit.

GPS antenna

With the passengers door open, where the A pillar meets the dash you will see a small square hole (with the side cover removed)



<http://pho.to/8ru9e/dg>

push the antenna into here, it's a fairly tight but it does fit, manoeuvre the antenna so it is sitting flat against the underside of the dash. Fill the remaining void with foam or wool so it doesn't move around. Run the cable under the dash, behind the foot well panel, around the vent pipe and into the head unit area.

Refitting

Refitting is pretty straight forward just do the reverse procedure. Make sure your cables etc are tucked away as much as you can behind the head unit as there isn't a lot of room for bunched up cables. To refit the rear boot liner you first need to remove the upper section around the window as the boot liner has clips that need to be slid down from the top. The upper section just pops off with your hands.

Extra notes

I fitted a non powered hub behind the head unit so I could plug in my passengers foot well usb cable (see usb cables video), my gsm modem and the dash cam. The remaining usb input was run to under the arm rest pocket, where I then plugged in a micro usb cable and ran this into the upper arm rest pocket and fitted a wireless charger so I can charge my Nexus 5



<http://pho.to/8ru9e/ik>

If you wanted to run rear headrest monitors I would suggest running your RCA's and power feed cables under the gearlever and arm rest and coming out beside the seats. I'm not fitting rear monitors at this stage because I don't want to have to listen to peppa pig hours on end when my daughter is in the car. A tablet suits us better.

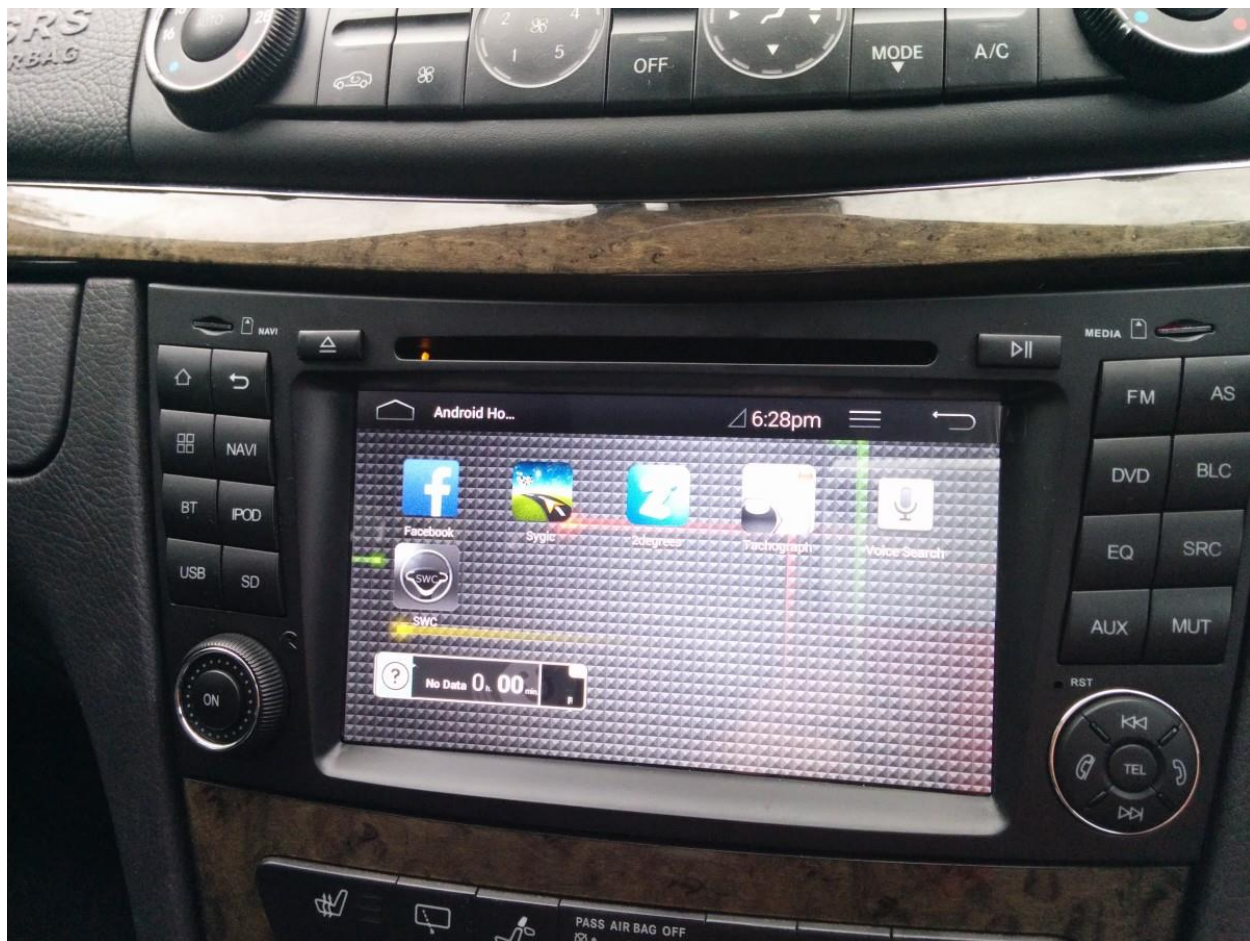
The finished product



<http://pho.to/8ru9e/gn>



<http://pho.to/8ru9e/ce>



<http://pho.to/8ru9e/ti>



<http://pho.to/8ru9e/xw>